

Price: 15.000,- €

SAP®-CERTIFIED INTERFACE

# FULLY INTEGRATED

## [FP]-LIMS SAP INTERFACE

- Secure interface to ERP systems
- Integration into the quality management process
- SAP® certified
- Fast and automatic data exchange
- Data-driven business decisions
- Learn more from your lab data

FACT SHEET

## WHAT IS THE SAP INTERFACE?

Fink & Partner offers an SAP®-certified interface for connecting [FP]-LIMS to SAP® QM.

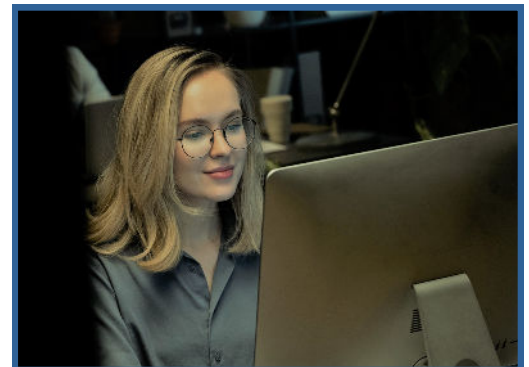
With the SAP interface, quality management can create inspection lots and inspection orders from SAP® QM based on defined criteria (e.g., plant, material, inspection type, or work center) and transfer them directly to the laboratory. [FP]-LIMS receives the orders, controls the execution of the necessary analyses, and automatically sends the results and status back to SAP QM. This keeps ERP and laboratory data synchronized and ensures that current, audit-relevant information is centrally available at all times.

The bidirectional exchange reduces manual data entry, avoids duplicate data records, and improves traceability. Responsibilities, timestamps, and result histories remain transparent across systems, supporting consistent processes, reliable reporting, and faster release decisions.

In combination with [FP]-LIMS Inspection Order Management, laboratories can manage order prioritization, sample allocation, and processing status in a structured manner while automatically keeping SAP QM up to date.


Other ERP systems can also be connected to [FP]-LIMS; technical feasibility, data mapping, and the necessary workflows are reviewed and implemented on a project-by-project basis.

This module is only available in conjunction with [FP]-LIMS Professional.



**SAP® Certified**  
Integration with SAP S/4HANA®

## THE ADVANTAGES AT A GLANCE

Prices and module overview 



- Connect your ERP system securely and reliably with [FP]-LIMS to ensure consistent master data and controlled data transfer.
- SAP®-certified integration enables efficient linking with SAP S/4HANA® and supports standard QM processes and interfaces.
- Faster, automated data exchange between systems reduces manual entry, avoids duplicates, and improves responsiveness.
- Seamless integration into your existing IT landscape using defined mappings, workflows, and role-based access rights.
- Better, data-driven decisions through up-to-date results, transparent information, and traceable histories across systems.